

Enabling enterprises to grow their business through open innovation

Gov-PACT Portal User Guide

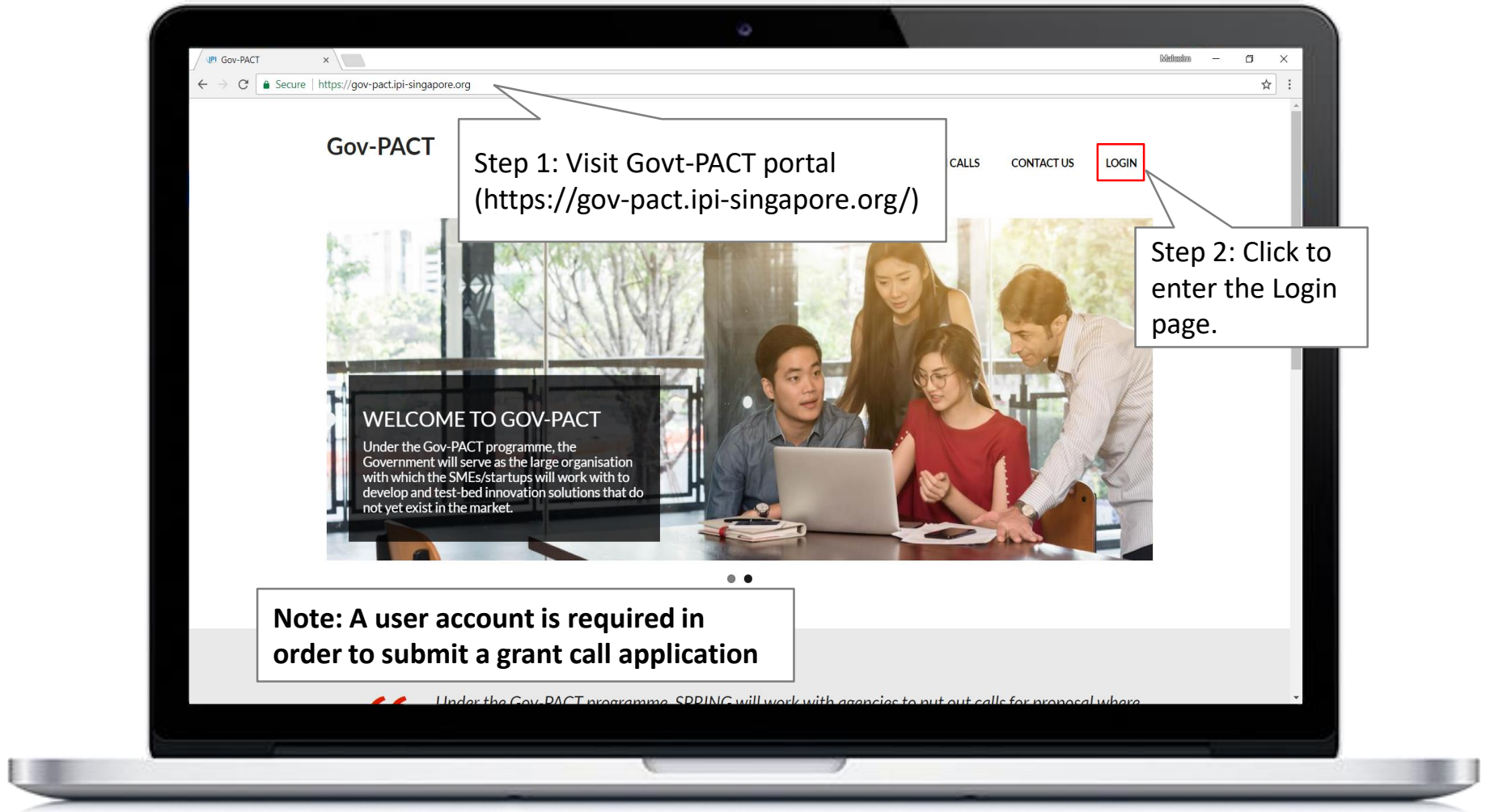


connecting
enterprises to
innovation

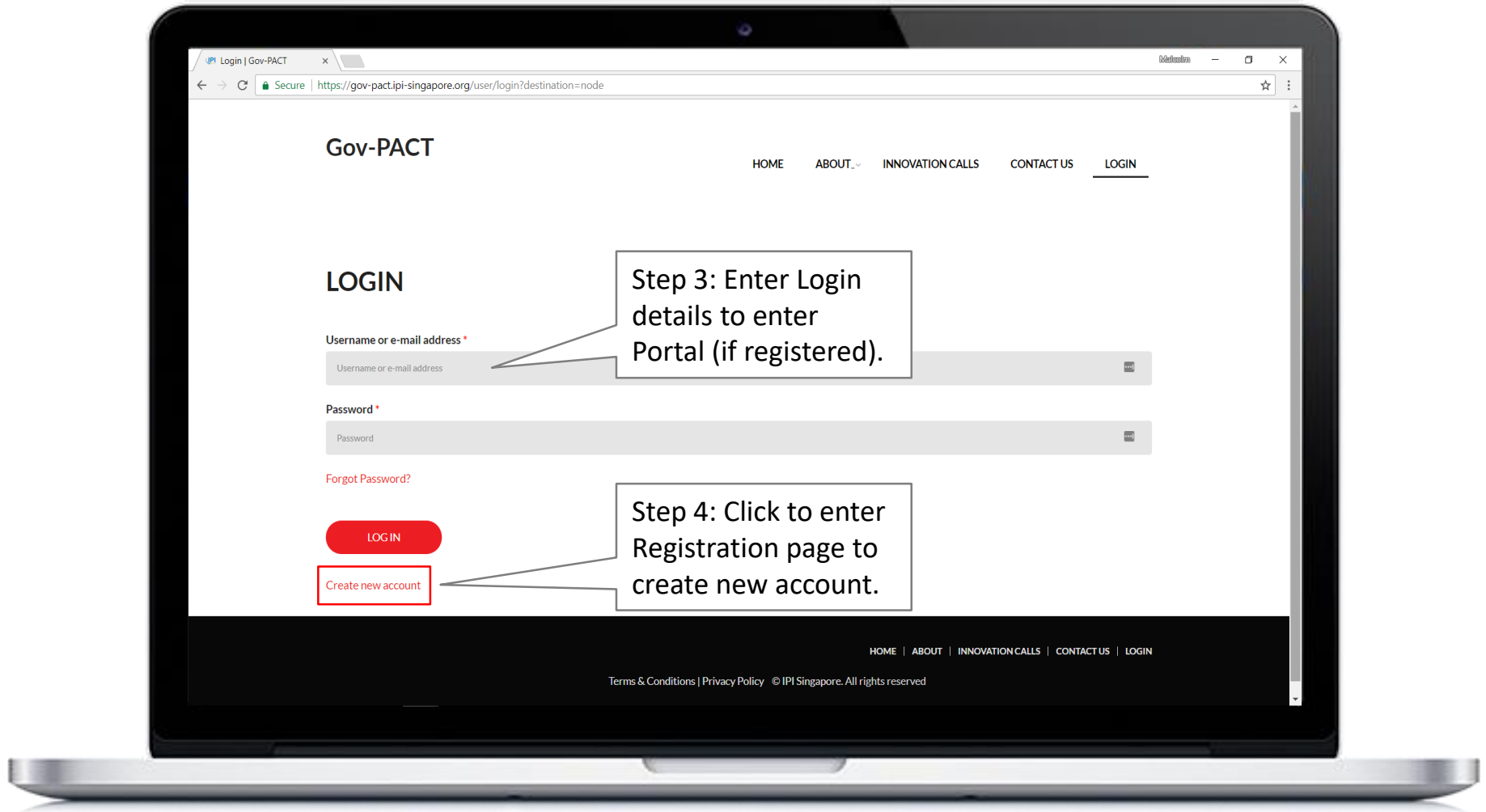
Gov-PACT Portal

Create a User Account

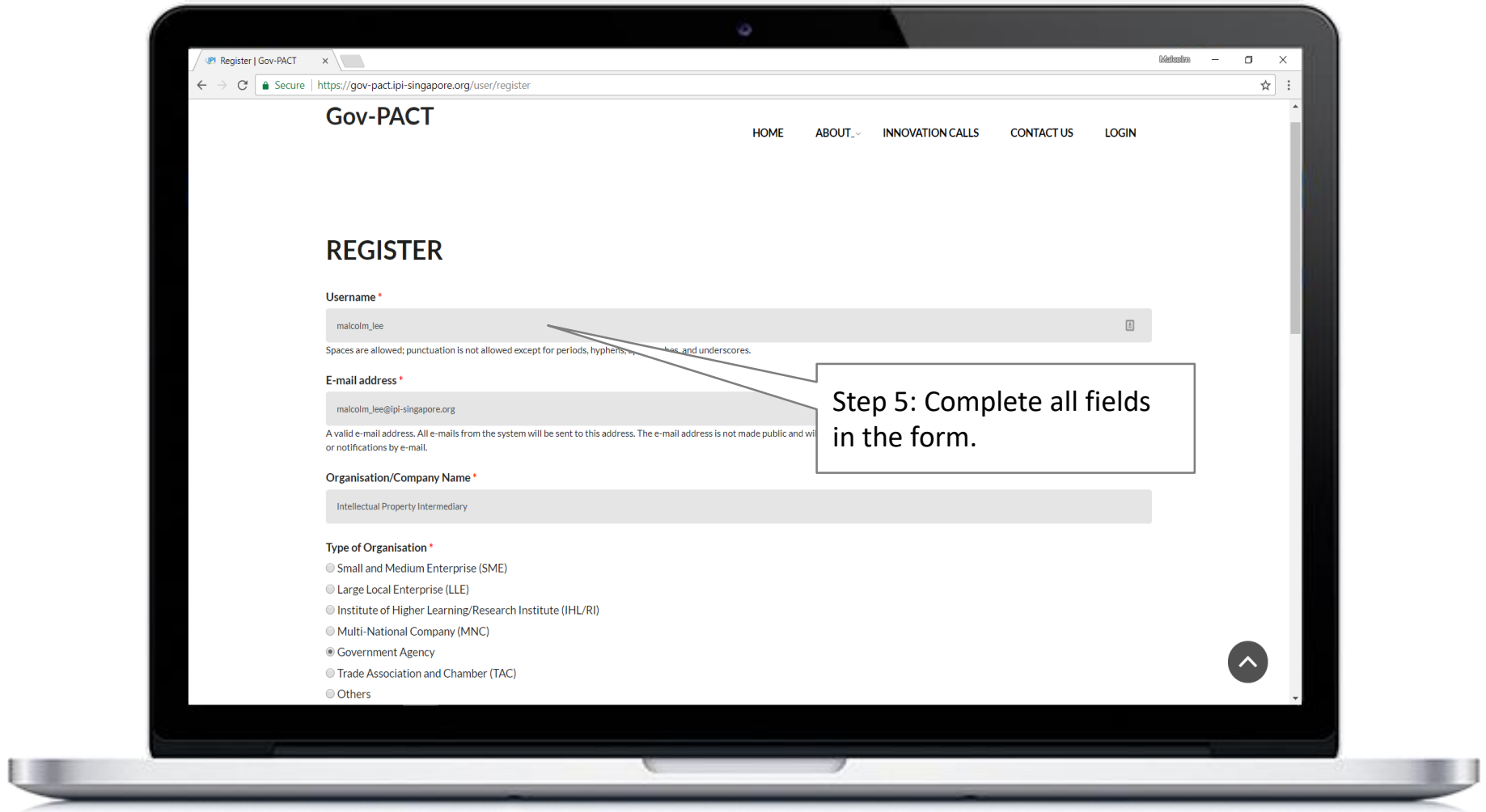
User Account Creation – Main Page



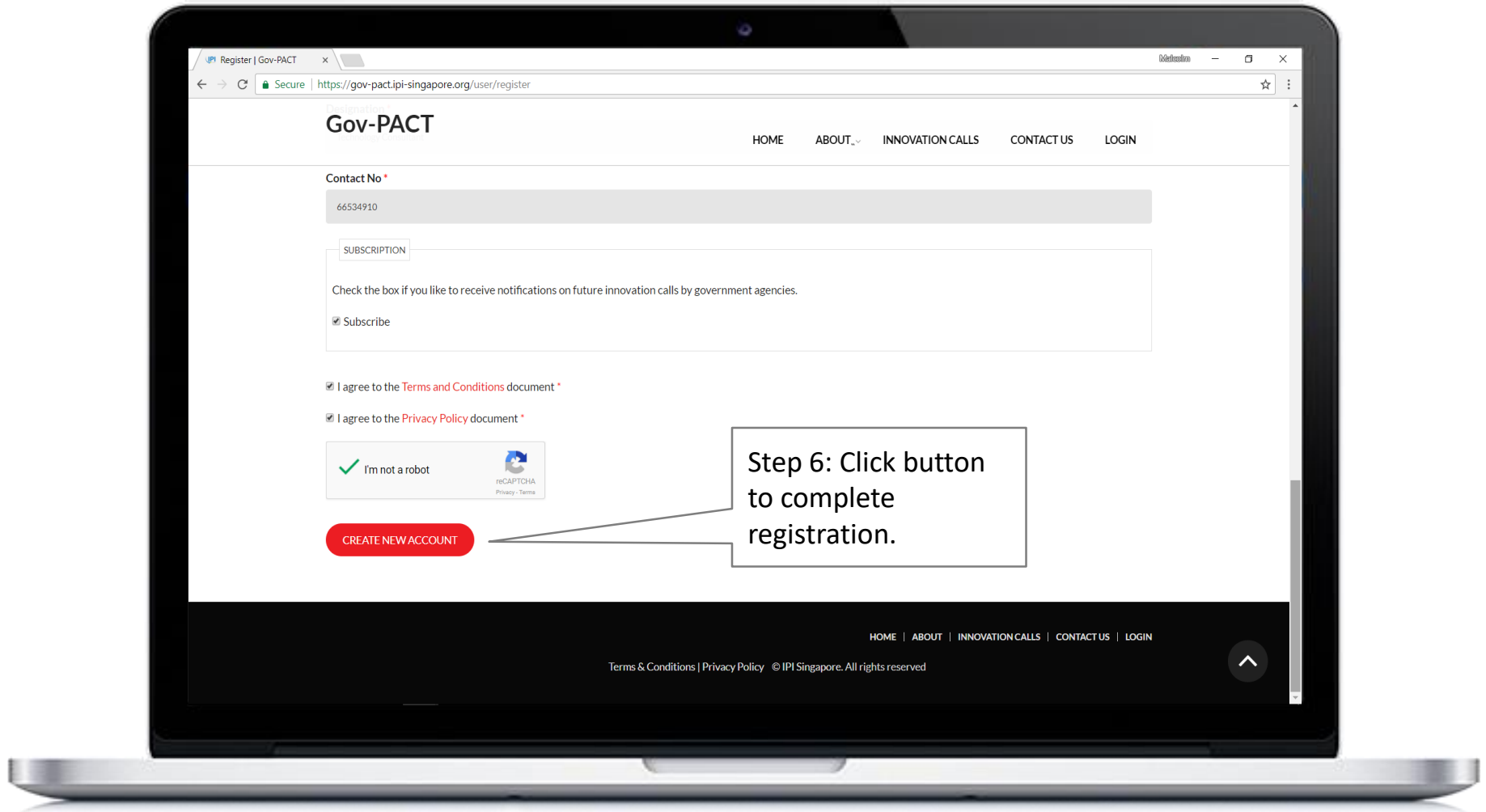
User Account Creation – Login Page



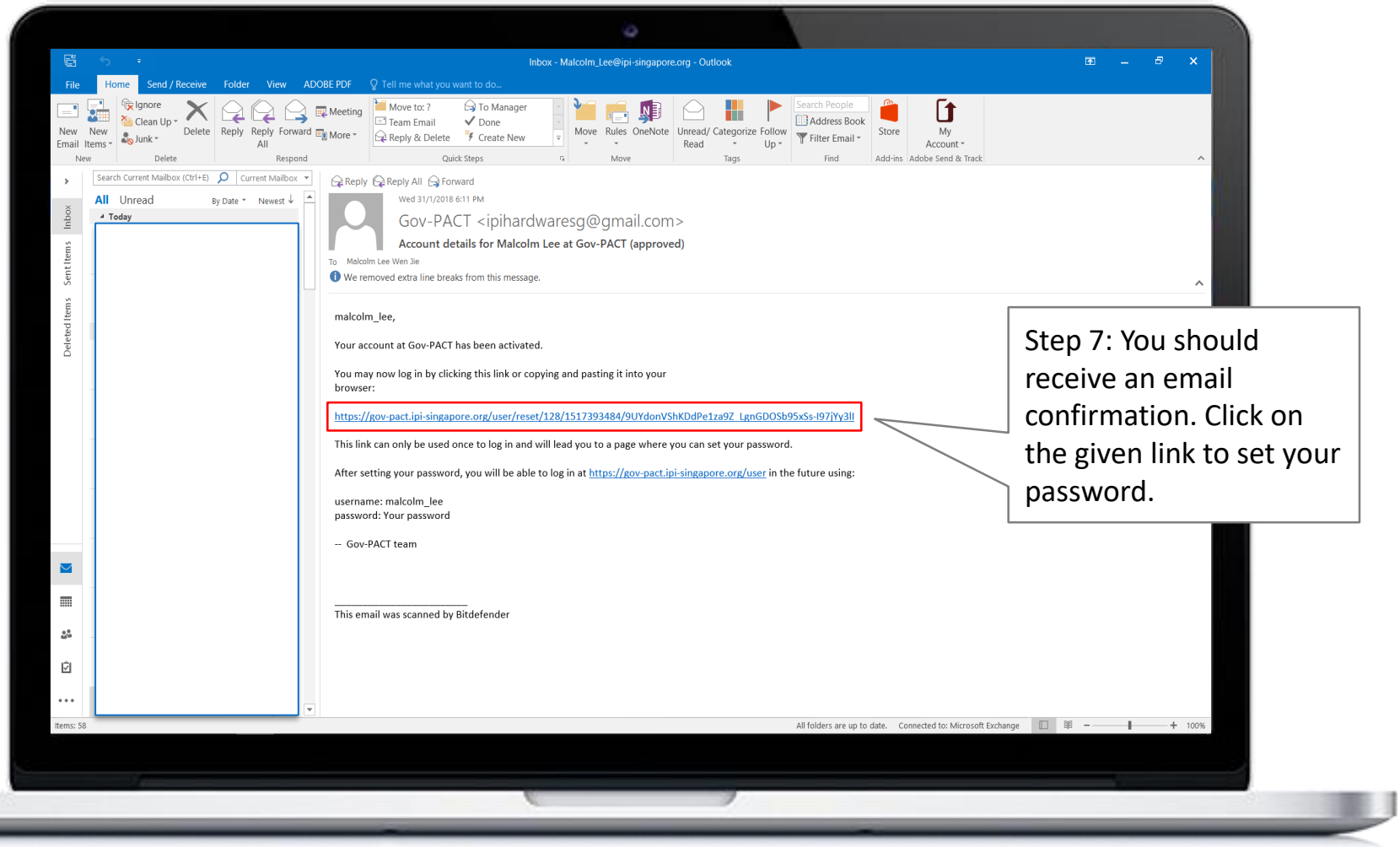
User Account Creation – Registration Page

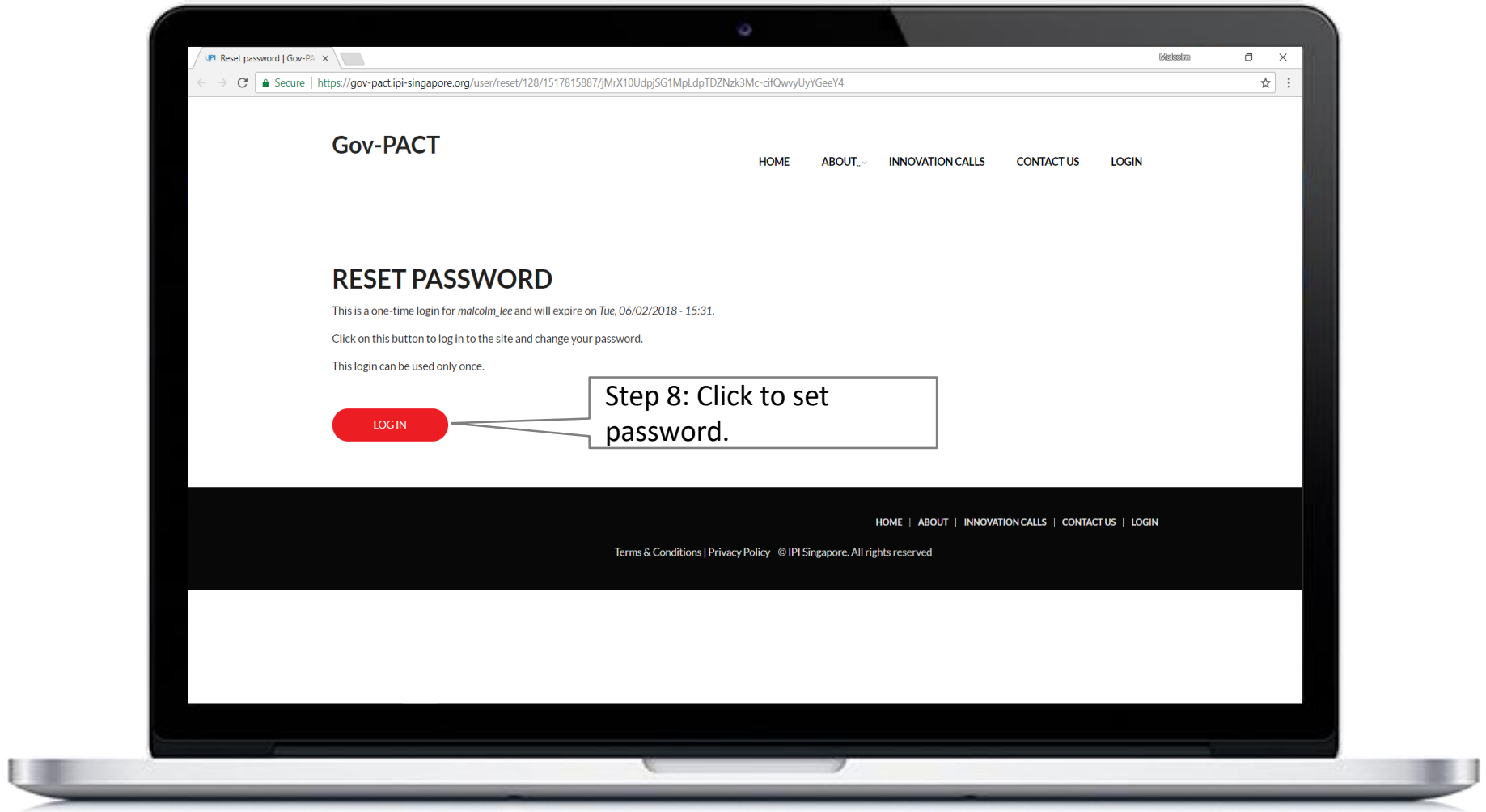


User Account Creation – Registration Page (2)

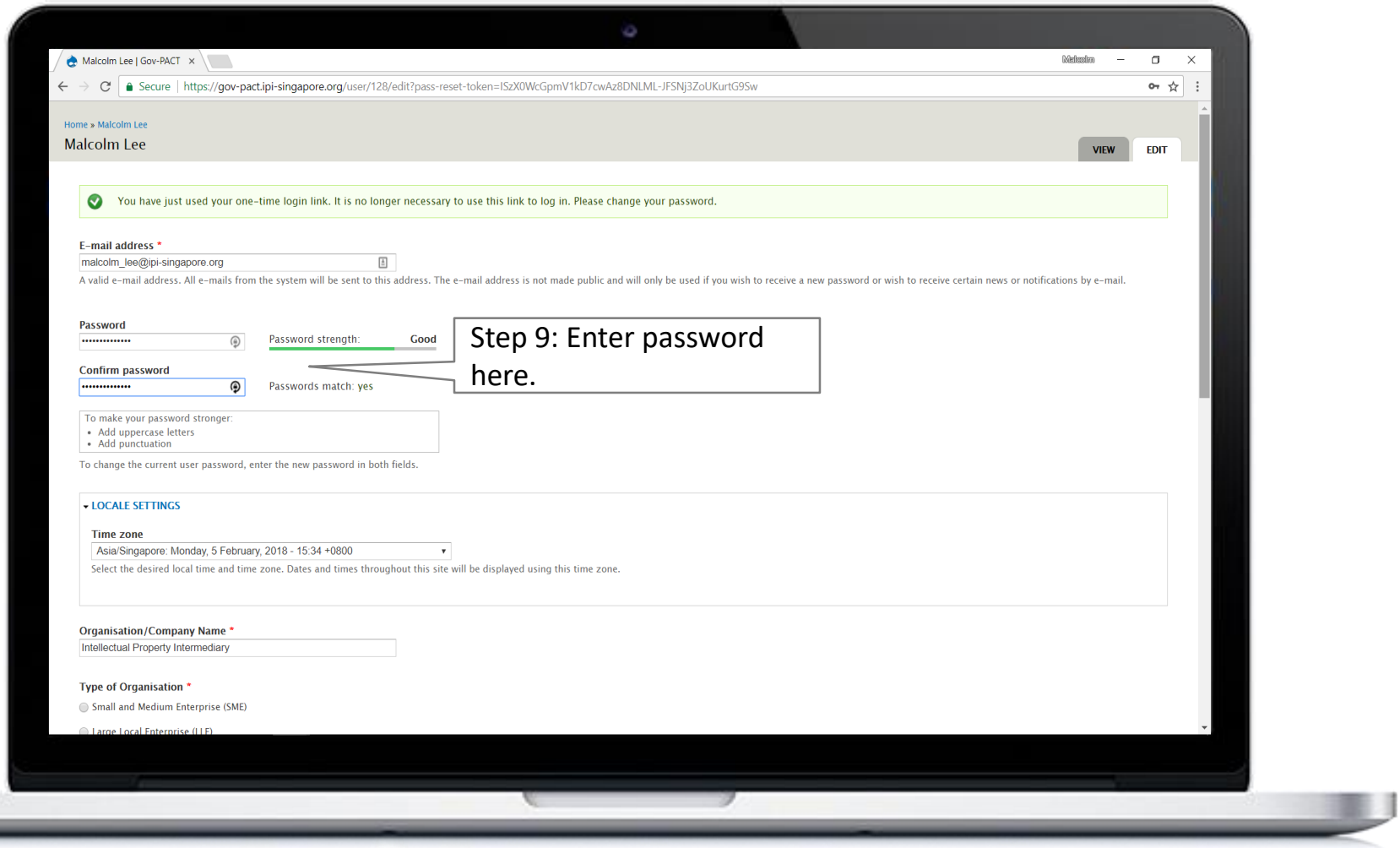


User Account Creation – User Account Activation

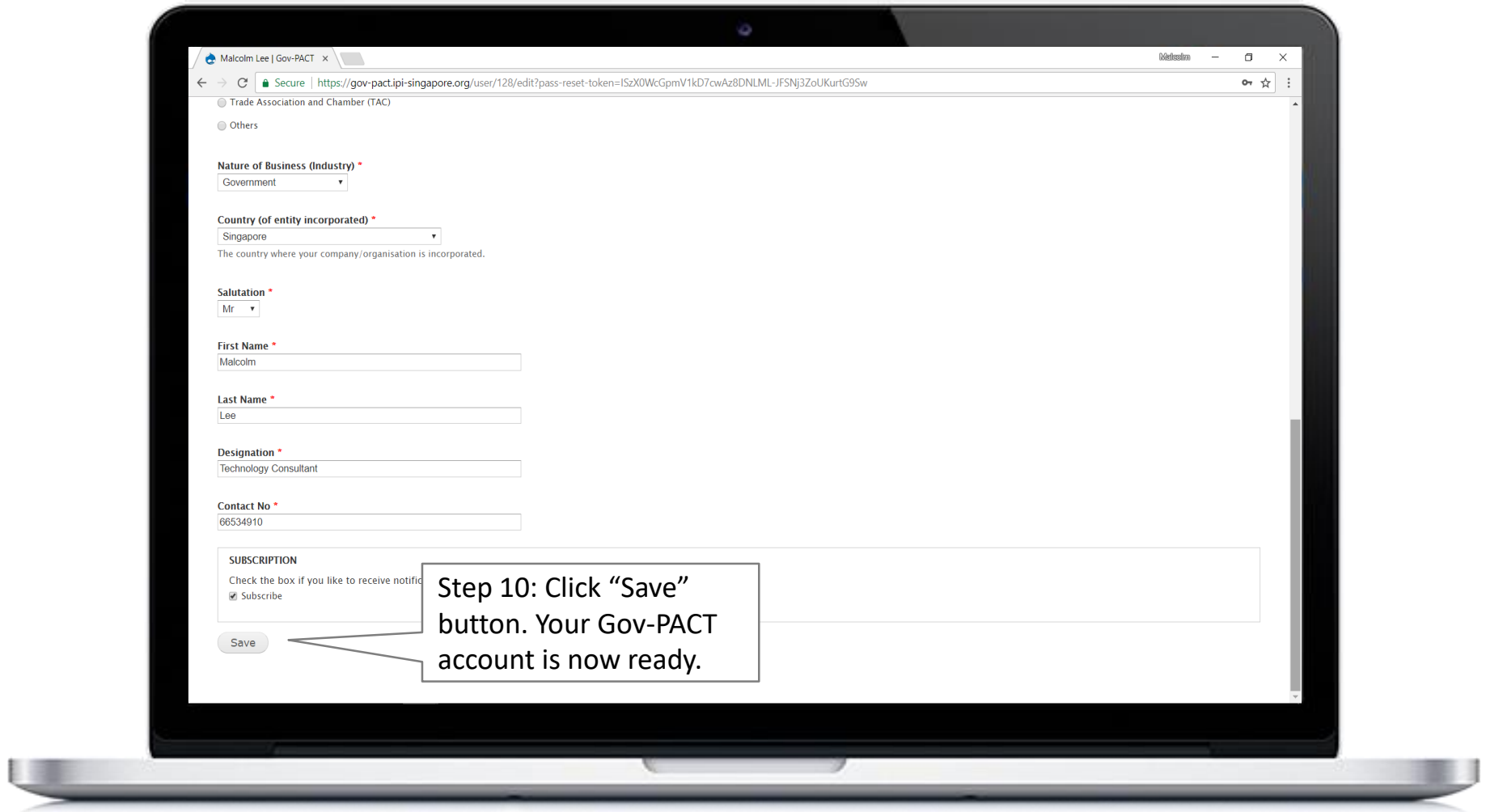




User Account Creation – Confirm Password

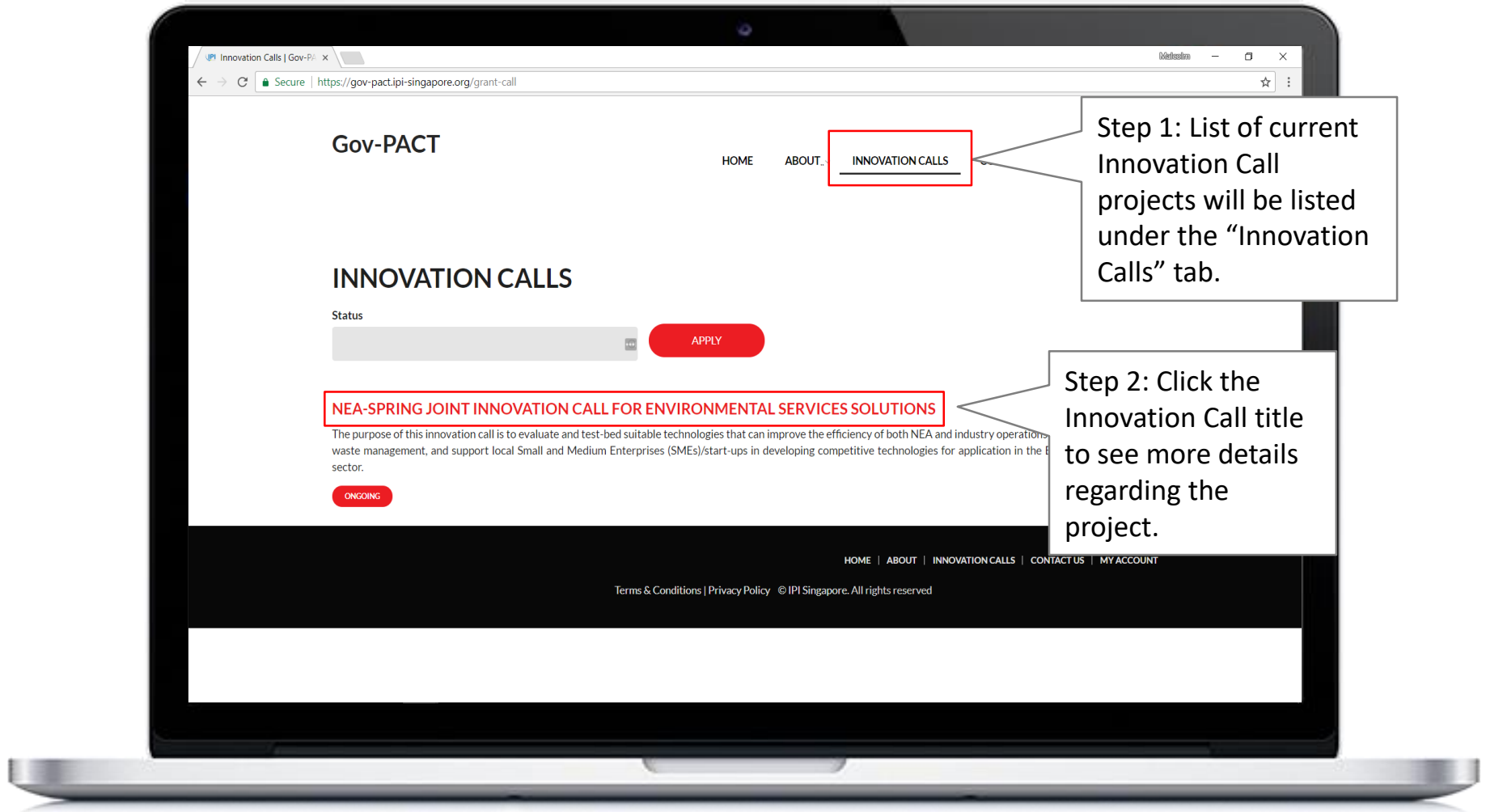


User Account Creation – Final Step



Gov-PACT Portal

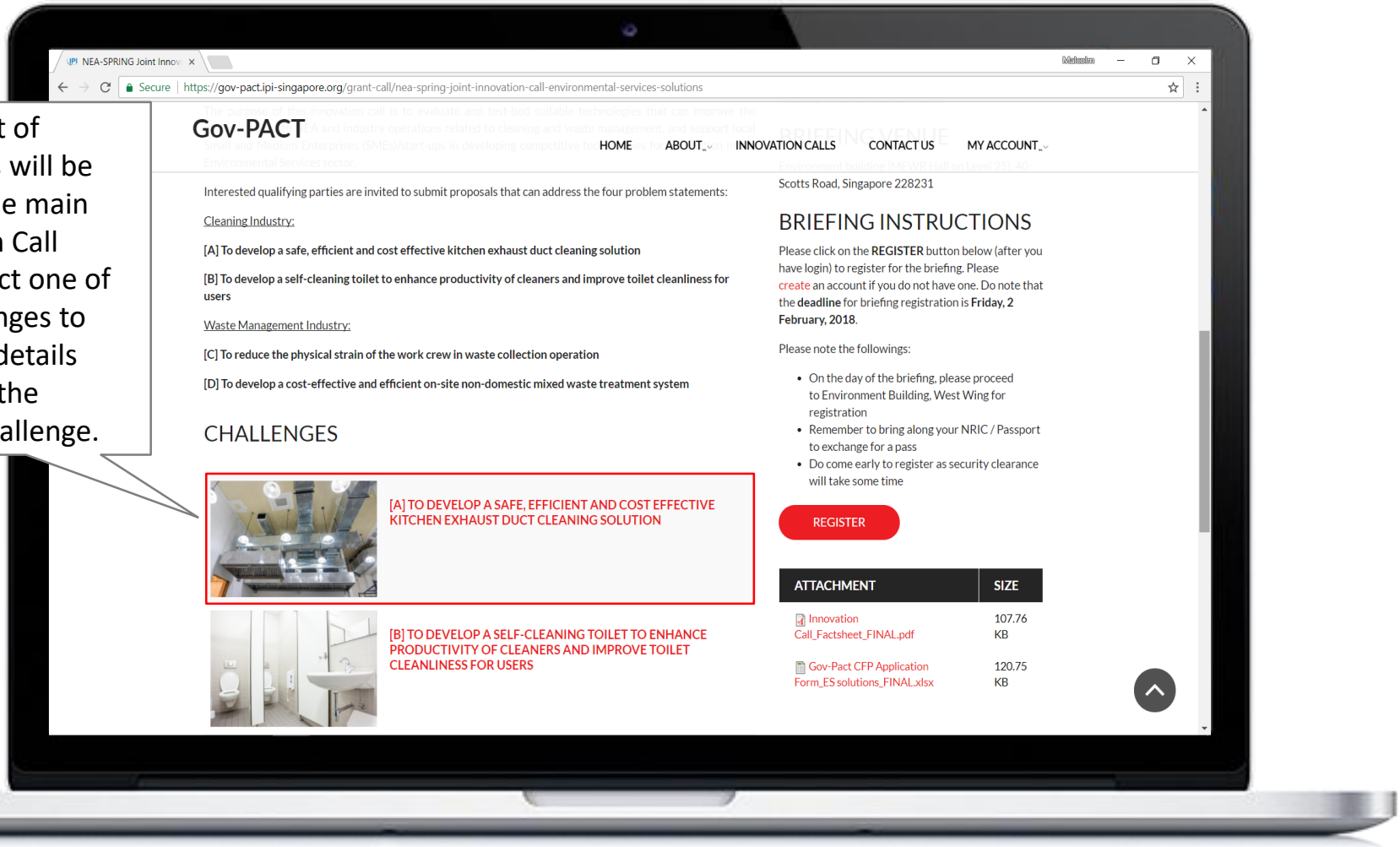
Submit a Grant Call Application

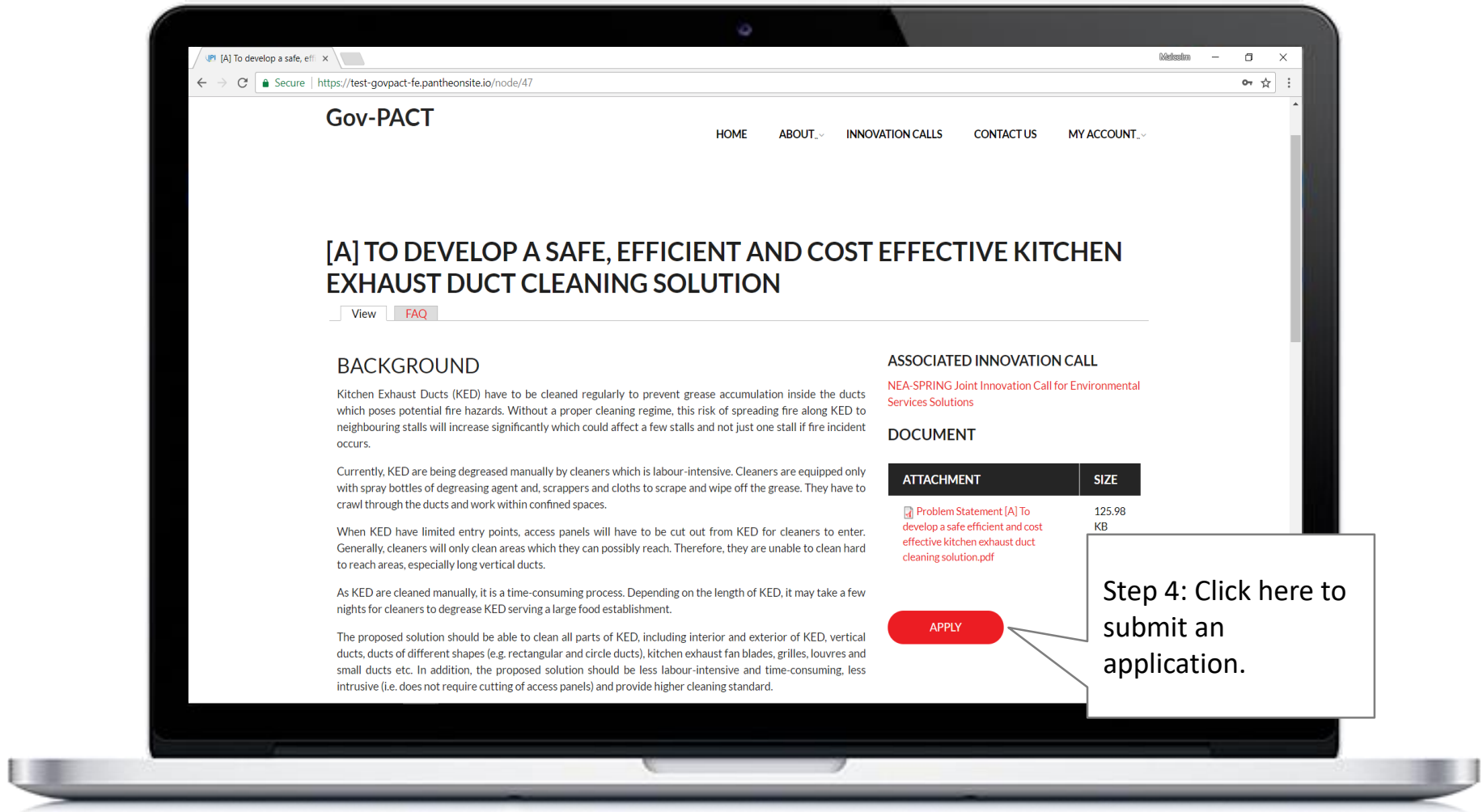


Step 1: List of current Innovation Call projects will be listed under the “Innovation Calls” tab.

Step 2: Click the Innovation Call title to see more details regarding the project.

Step 3: List of challenges will be listed in the main Innovation Call page. Select one of the challenges to see more details regarding the specific challenge.





Gov-PACT

HOME ABOUT INNOVATION CALLS CONTACT US MY ACCOUNT

[A] TO DEVELOP A SAFE, EFFICIENT AND COST EFFECTIVE KITCHEN EXHAUST DUCT CLEANING SOLUTION

View [FAQ](#)

BACKGROUND

Kitchen Exhaust Ducts (KED) have to be cleaned regularly to prevent grease accumulation inside the ducts which poses potential fire hazards. Without a proper cleaning regime, this risk of spreading fire along KED to neighbouring stalls will increase significantly which could affect a few stalls and not just one stall if fire incident occurs.

Currently, KED are being degreased manually by cleaners which is labour-intensive. Cleaners are equipped only with spray bottles of degreasing agent and, scrappers and cloths to scrape and wipe off the grease. They have to crawl through the ducts and work within confined spaces.

When KED have limited entry points, access panels will have to be cut out from KED for cleaners to enter. Generally, cleaners will only clean areas which they can possibly reach. Therefore, they are unable to clean hard to reach areas, especially long vertical ducts.

As KED are cleaned manually, it is a time-consuming process. Depending on the length of KED, it may take a few nights for cleaners to degrease KED serving a large food establishment.

The proposed solution should be able to clean all parts of KED, including interior and exterior of KED, vertical ducts, ducts of different shapes (e.g. rectangular and circle ducts), kitchen exhaust fan blades, grilles, louvres and small ducts etc. In addition, the proposed solution should be less labour-intensive and time-consuming, less intrusive (i.e. does not require cutting of access panels) and provide higher cleaning standard.

ASSOCIATED INNOVATION CALL

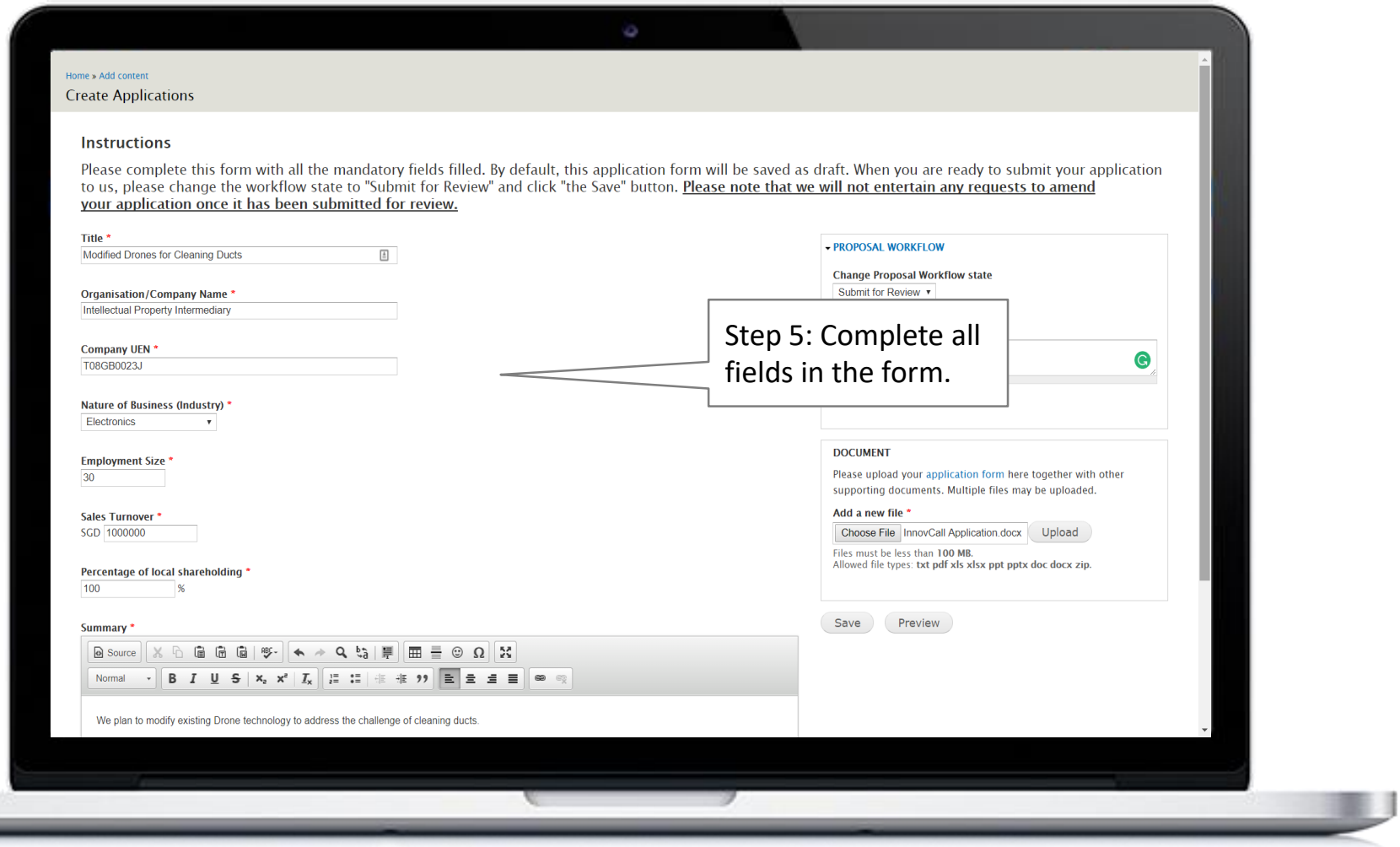
[NEA-SPRING Joint Innovation Call for Environmental Services Solutions](#)

DOCUMENT

ATTACHMENT	SIZE
Problem Statement [A] To develop a safe efficient and cost effective kitchen exhaust duct cleaning solution.pdf	125.98 KB

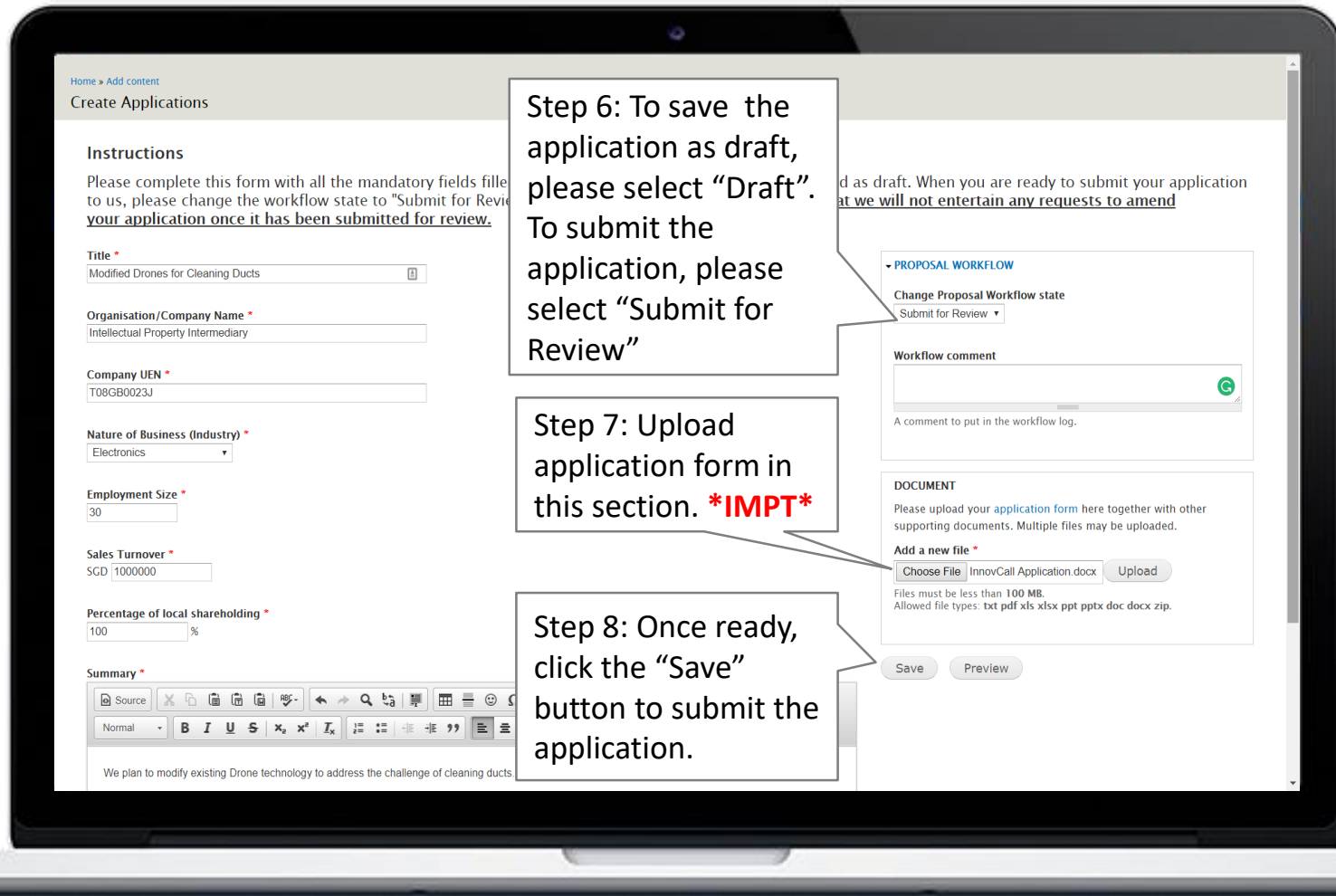
APPLY

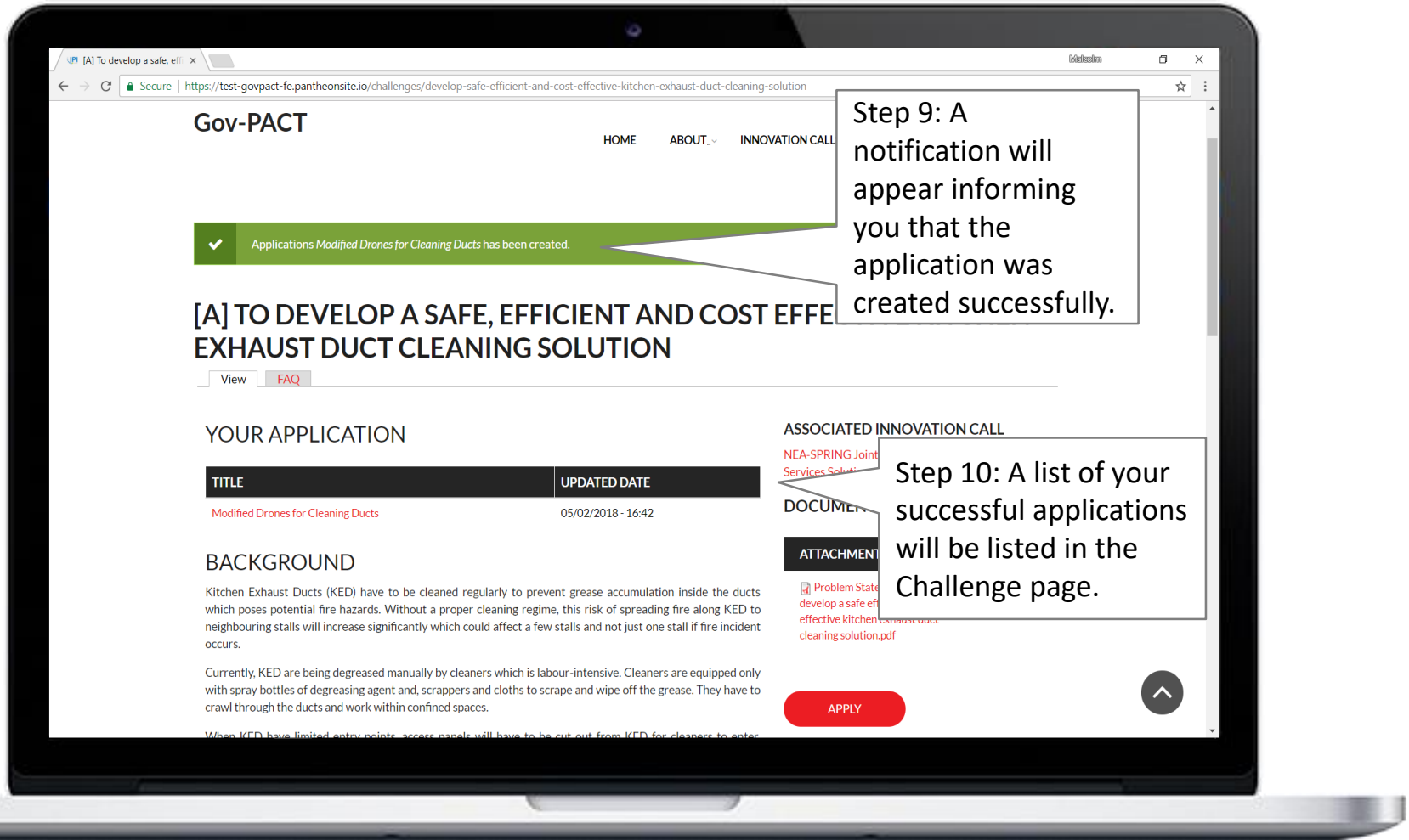
Step 4: Click here to submit an application.



Step 5: Complete all fields in the form.

Application Submission – Application Page

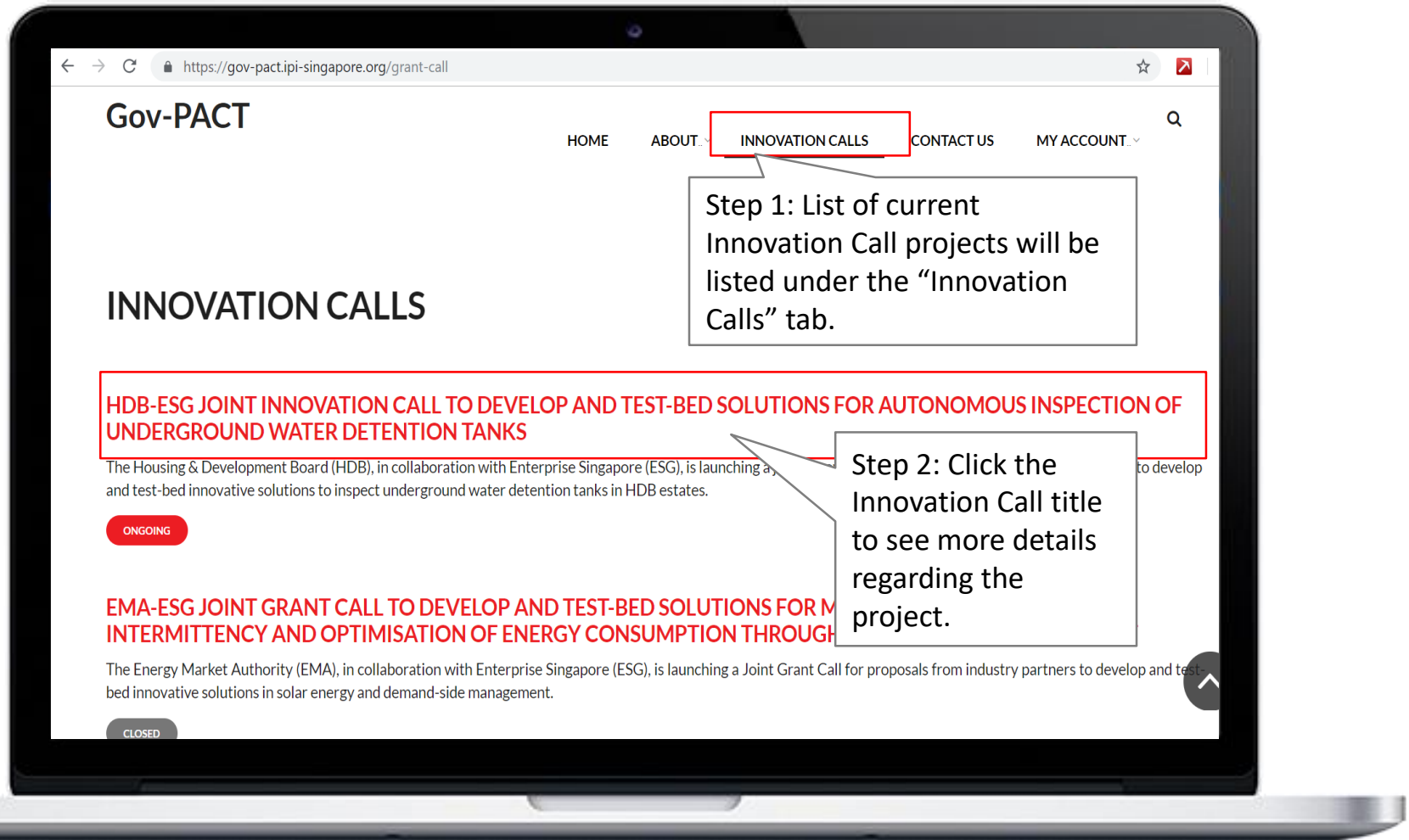


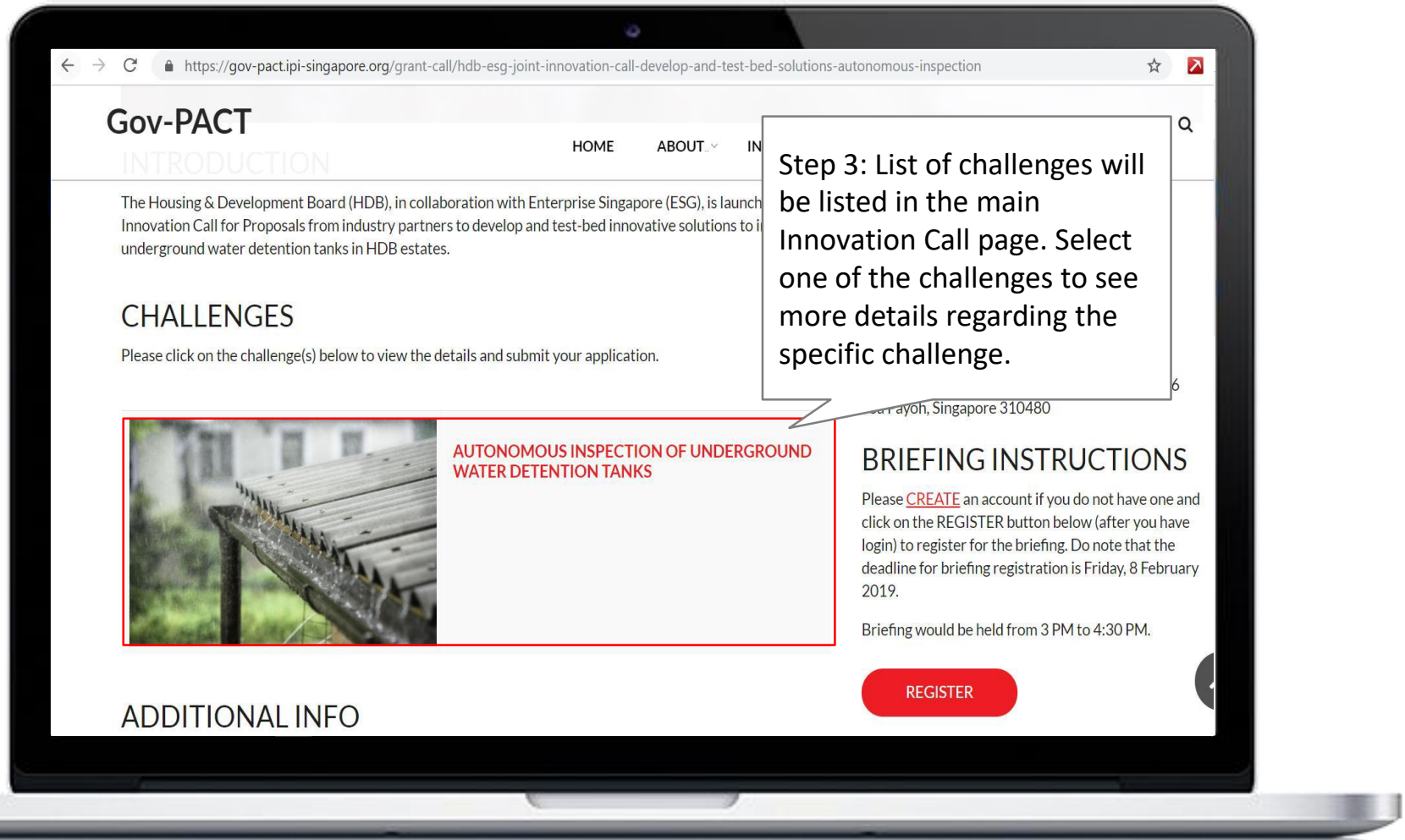


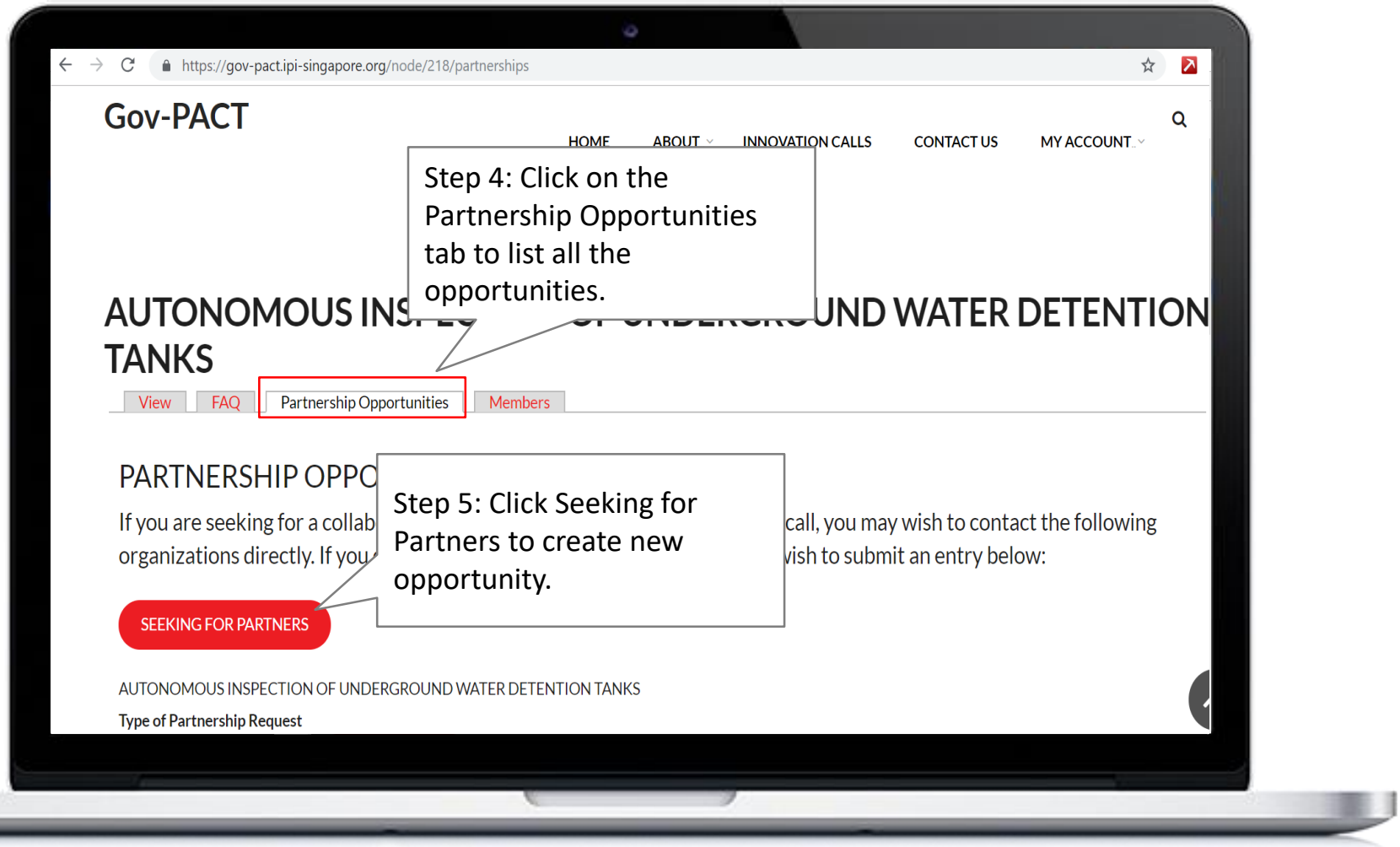
Gov-PACT Portal

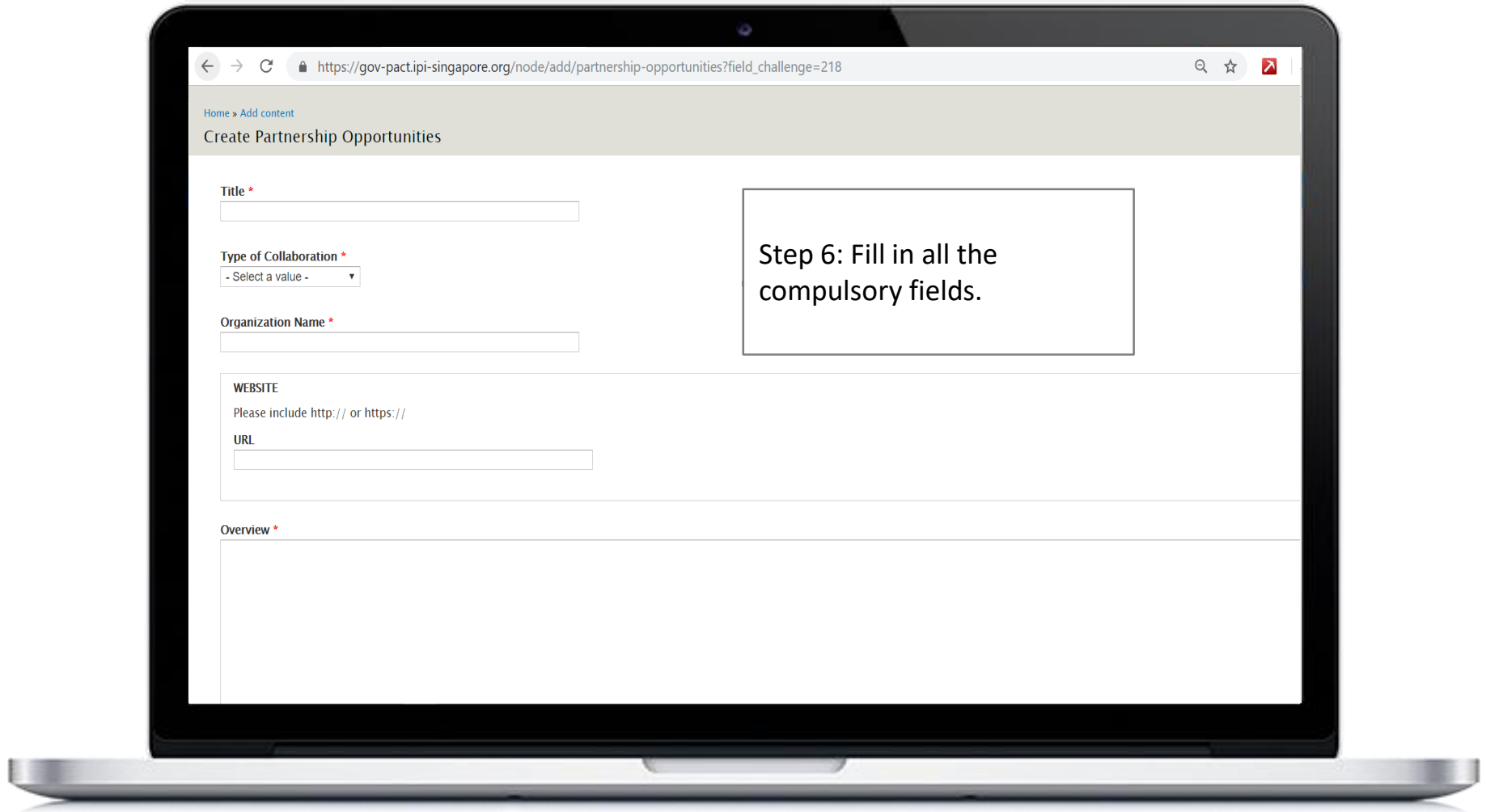
Create Partnership Opportunity

(PO)

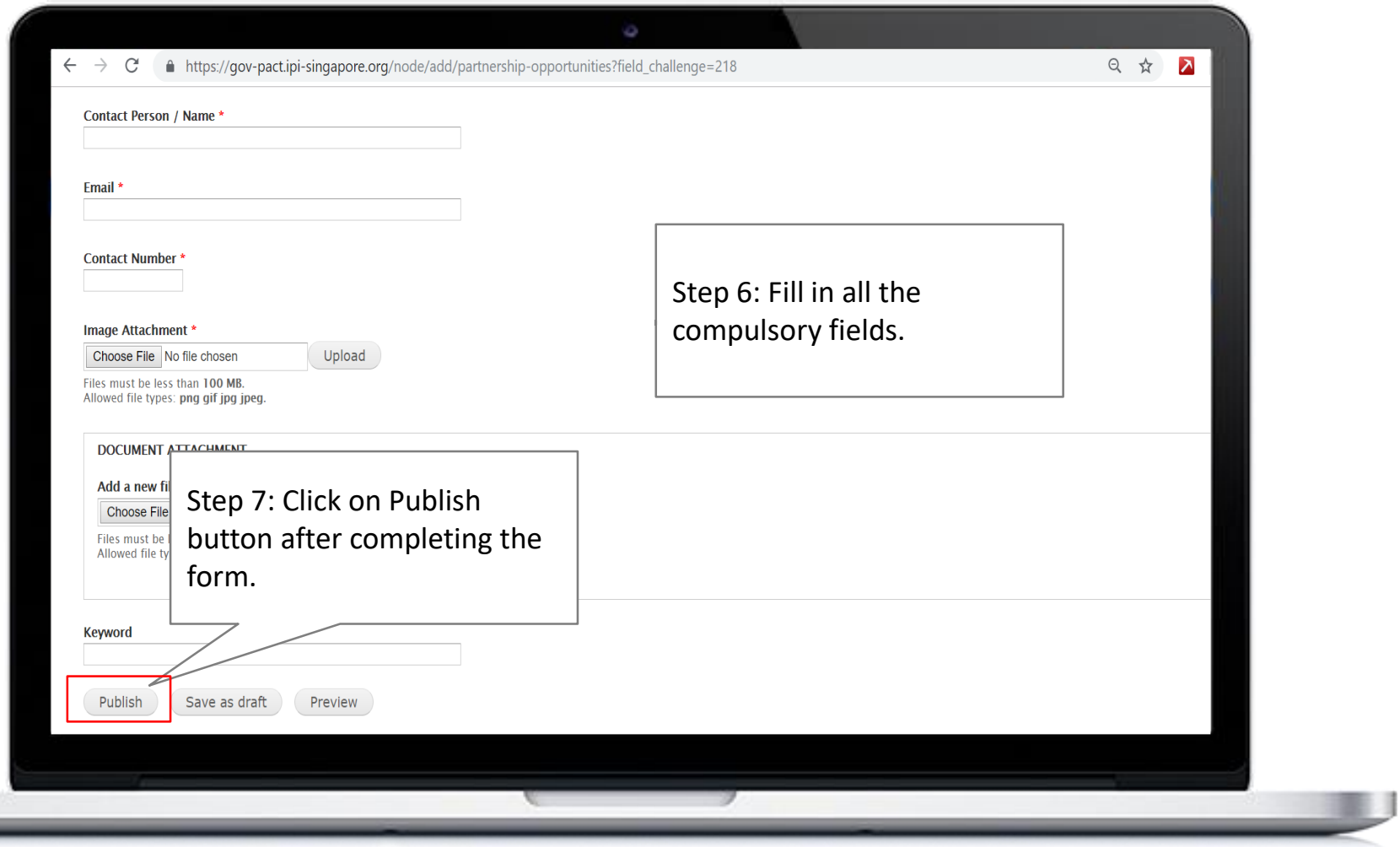








Application Submission – Application Page



Thank You

Goh_boon_kiat@ipi-singapore.org
+65 9009 6146

Follow us on

